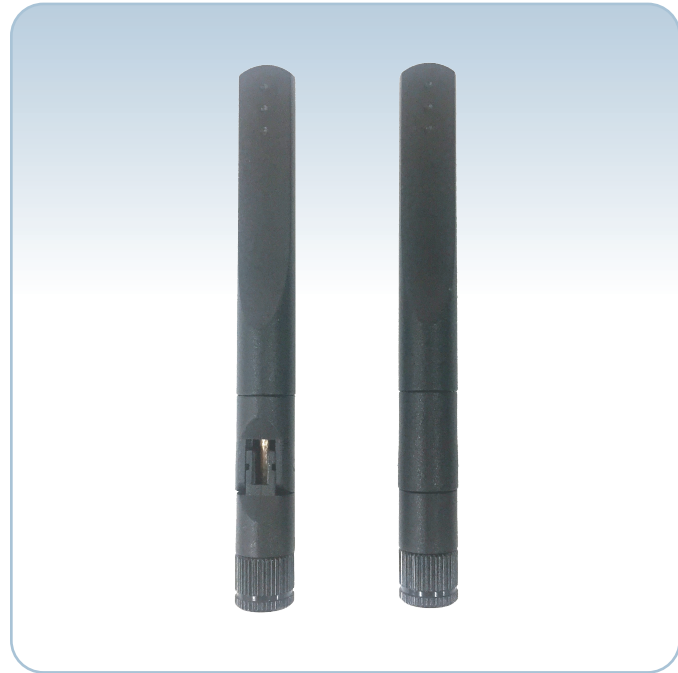


# TB-2400/5000-RPSMA(Black)

- ◆ Tilt Base type Omni Antenna
- ◆ Dual Wide Band
- ◆ Compact Size
- ◆ High Performance



## ◆ Electrical Specifications

Item	Specification
Frequency Range	2400~2483MHz 5150~5350MHz, 5700~5850MHz
Gain	2dBi
V.S.W.R(Max.)	Less than 2
Impedance	50Ω
Polarization	Vertical
Power Input(Max.)	5W

## ◆ Mechanical

Item	Specification
Dimensions	100mm x 11ØAnt. Only
Weight	15g
Connector Type	RPSMA-Type male (Black)
Mount type	Tilt Mount
Operating Temp	-30° ~ +60° C

