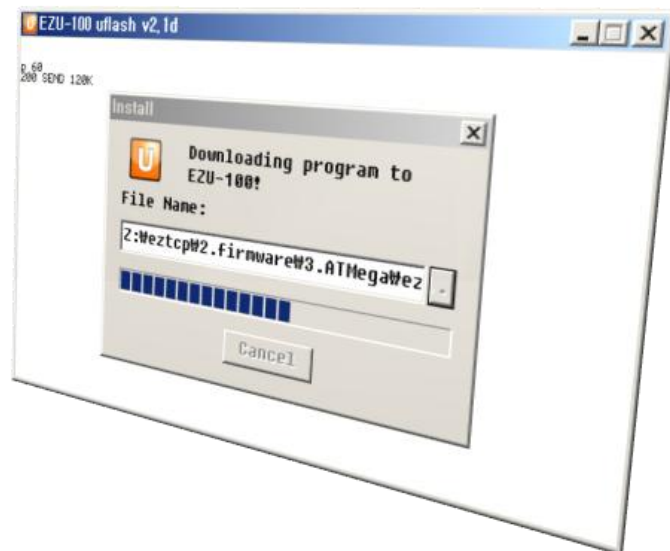


## Application Note

# Upgrading Firmware of CSP-H50

Version 1.0

2010-03-10



Sollae Systems Co., Ltd.

<http://www.sollae.co.kr>

# Contents

<b>Contents.....</b>	<b>- 1 -</b>
<b>1 Firmware Upgrade.....</b>	<b>- 2 -</b>
1.1 Introduction .....	- 2 -
1.2 Firmware Upgrade .....	- 2 -
1.2.1 Preparation.....	- 2 -
1.2.2 Run uflash.....	- 2 -
1.2.3 Configuring Port .....	- 3 -
1.2.4 Selecting a Firmware.....	- 4 -
1.2.5 Entering ISP mode.....	- 5 -
1.2.6 Reset .....	- 6 -
<b>2 Revision History .....</b>	<b>- 7 -</b>

# 1 Firmware Upgrade

## 1.1 Introduction

Every function of ezTCP is programmed in the Firmware. Firmware is a type of software and it should be in memory of ezTCP. When new firmware is released, users need to upgrade their CSP-H50. Please refer to the below steps.

## 1.2 Firmware Upgrade

### 1.2.1 Preparation

Connect the serial port of CSP-H50 to your PC with a crossed RS232 cable. The power is not needed to be supplied in this situation.

### 1.2.2 Run uflash

Run uflash.

uflash is software for sending F/W file through serial.

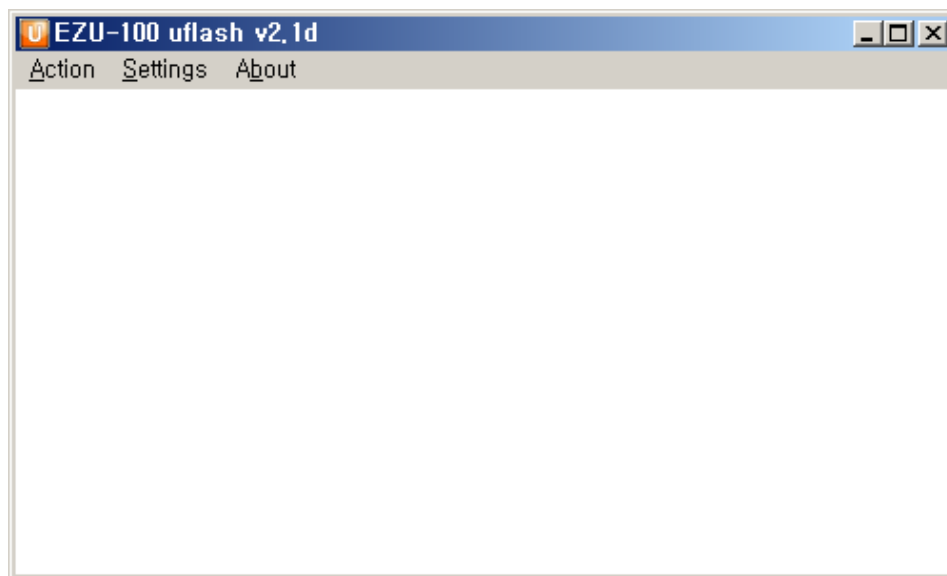


Fig 1-1 Initial window of uflash

☞ *The program displays as 'EZU-100', because of EZU-100 and CSP-H50 use the same utility.*

### 1.2.3 Configuring Port

- Disconnect the default serial connection with [Action] -> [Disconnect].

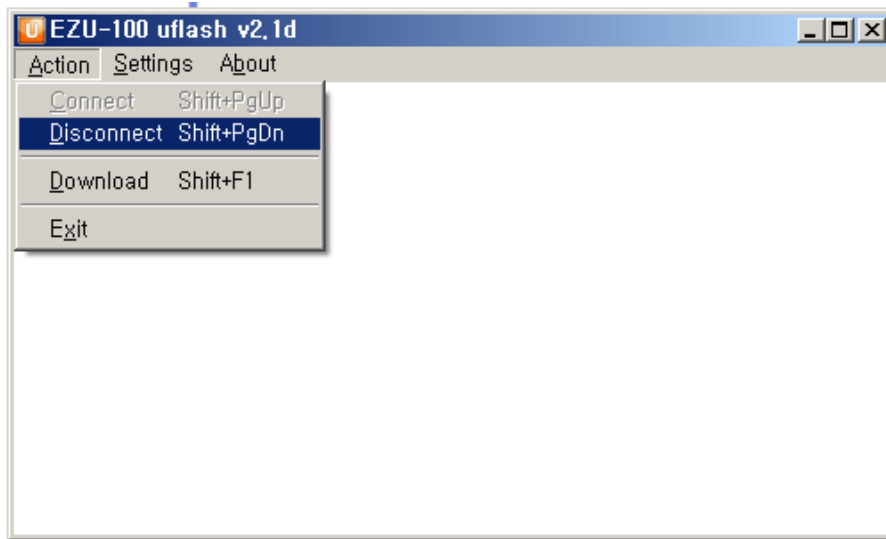


Fig 1-2 Disconnecting default connection

- Set as the following with [Settings]. And Select COM port as your environment. In this example, COM8 is used. You should select a COM port which you use. (Check the port number in the Device Manager on Windows)

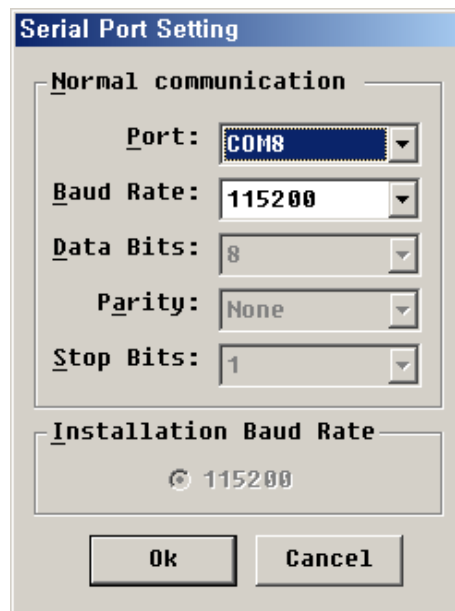


Fig 1-3 Window of Setting

- Open COM port with [Action] -> [Connect]

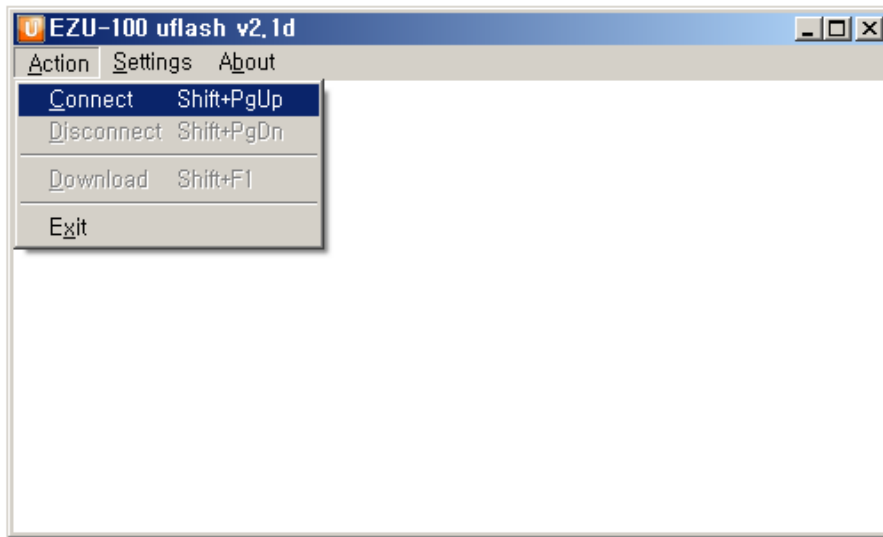


Fig 1-4 Opening COM port

### 1.2.4 Selecting a Firmware

- Select a firmware to download with [Action] -> [Download] -> [...]

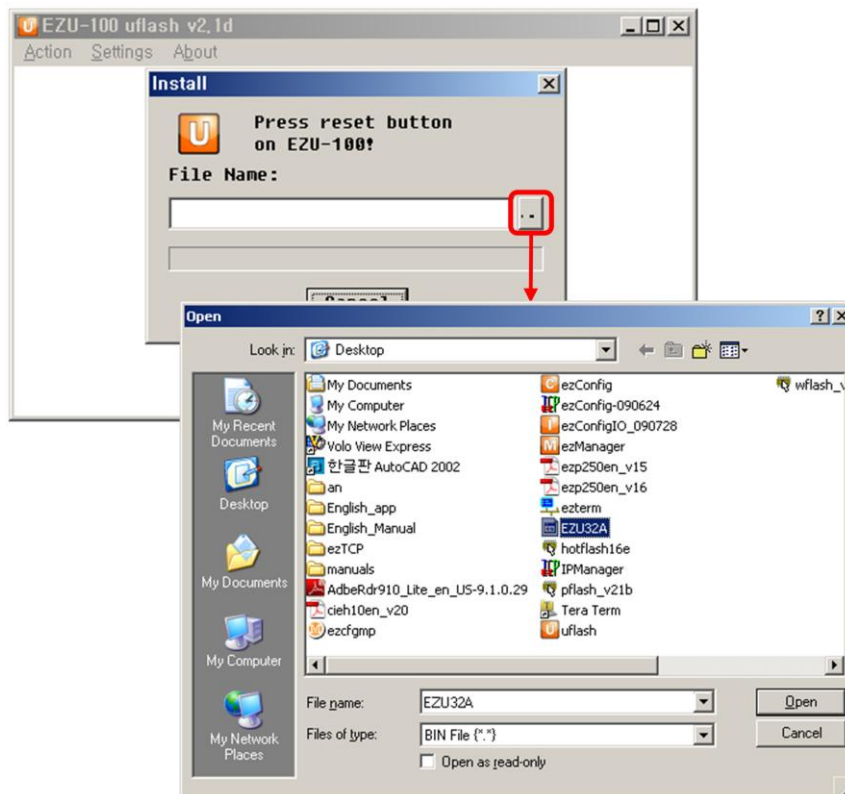


Fig 1-5 Selecting a firmware file

### 1.2.5 Entering ISP mode

- After selecting the firmware file, supply the power to CSP-H50 with pressing ISP button on the side of body.

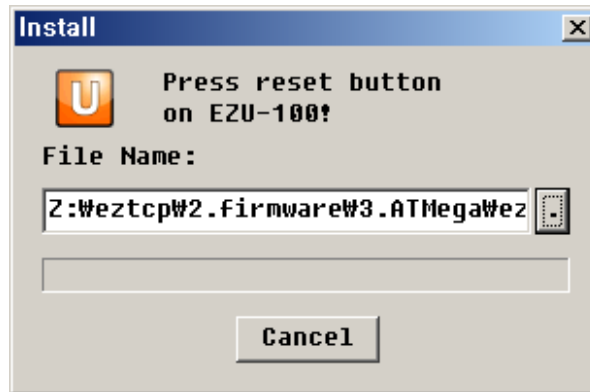


Fig 1-6 Reset

- If CSP-H50 enters the ISP mode properly, the file will be sent automatically.

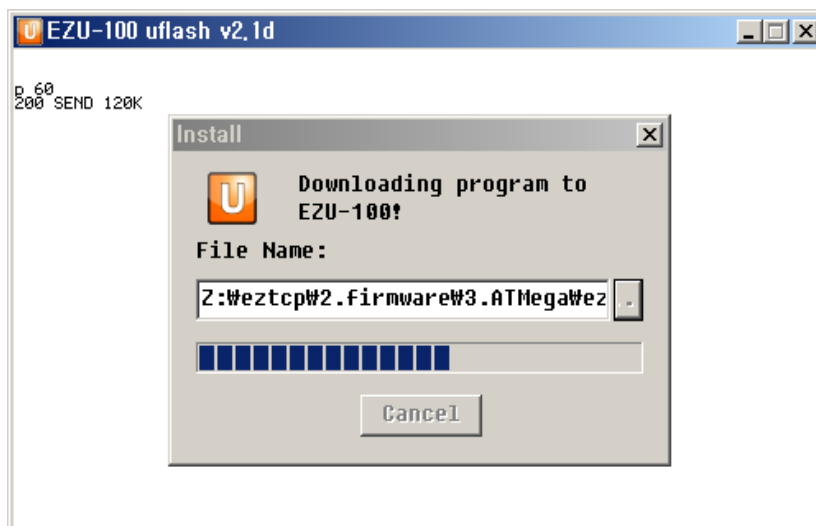


Fig 1-7 Progressing download

- If the following messages are shown in the main window of uflash, the downloading would have been completed.

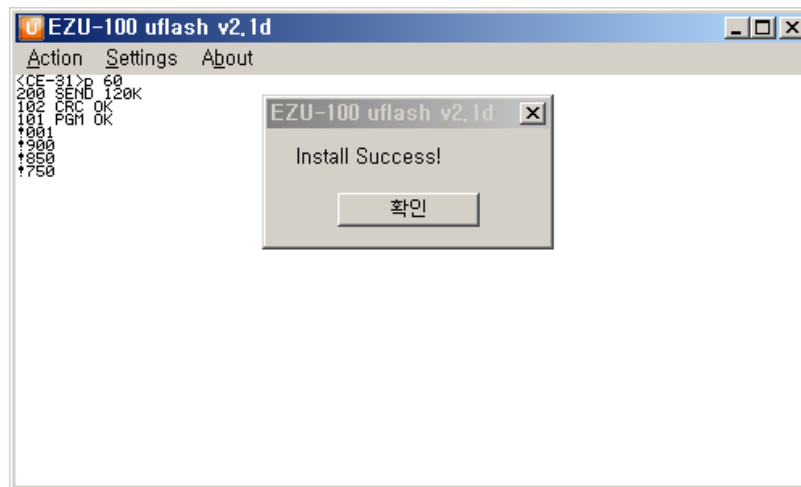


Fig 1-8 Successful download

## 1.2.6 Reset

If the transmission is completed, CSP-H50 will reset automatically and operate in Auto-connection mode.

## 2 Revision History

Date	Version	Description	Author
2010.03.10	1.0	○ Created	Roy