

# CSE-T32

## (32 Ports Console Server)



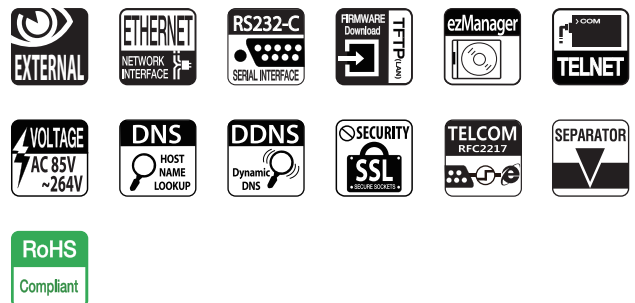
## Overview

CSE-T32 is 32 ports console server allowing devices with console ports to be embedded with networking capabilities. With CSE-T32, therefore, you can easily monitor status of console ports over the network from anywhere in the world. It also helps you save your time and energy by improving efficiency of integrated management and control of many devices in diverse applications. This RS232 console server is an ideal solution for Remote Console Monitoring as it supports useful features such as 32 ports of RS232, a security protocol(SSL) to protect data transmission, sharing serial ports through the network(Telnet with RFC2217), etc.

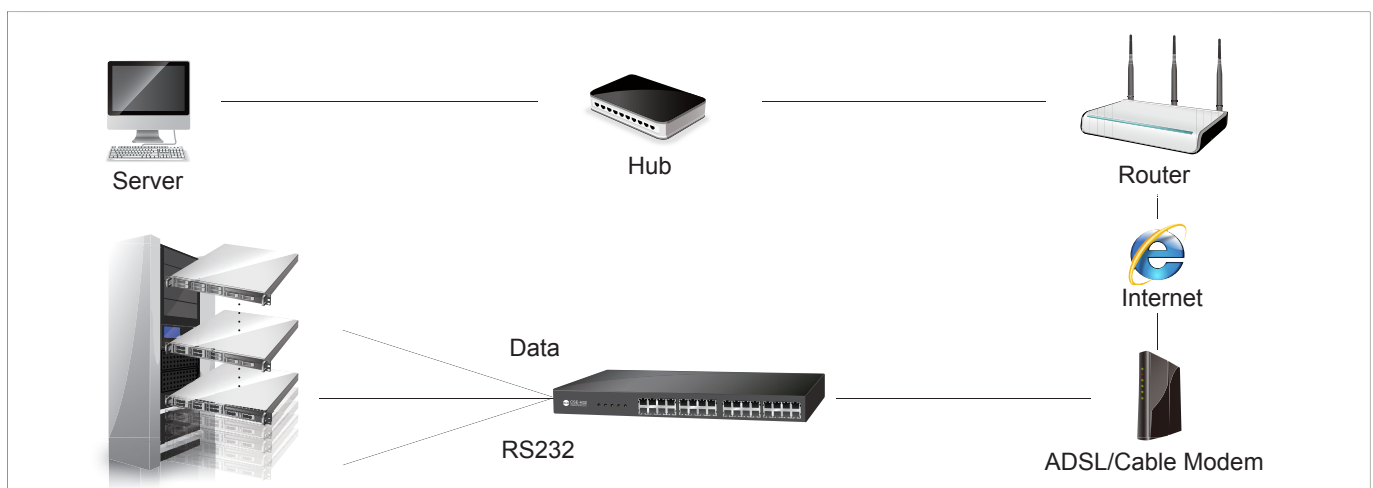
## Highlights

- RS232 to Ethernet Converter
- Ethernet 10Base-T or 100Base-TX (Auto-Sensing)
- 32 x RS232 (RJ45, up to 115,200bps)
- Security Functions (SSL3.0/TLS1.0, Password)
- Telnet COM Port Control Option (Telnet with RFC2217)
- Support of DHCP for DSL and cable network
- Separator settings for packet fragmentation

## Icons



## Applications



# Specifications

## Serial Physical Interface

Serial Interface	32 x RS232 ports
	RXD, TXD, RTS, CTS, DTR, DSR, GND
Connector	32 x RJ45 Connectors

## Serial Port Properties

Baudrate	300bps ~ 115,200bps
Data Bits	5, 6, 7, 8 bits
Parity	None, Even, Odd, Mark, Space
Stop Bit	1, 1.5, 2

## Network Physical Interface

Ethernet	10Base-T/100Base-TX Ethernet (RJ45)
	Ethernet Speed Auto Sense
	1:1 or Cross-over Cable Auto Sense

## Software Functions

Protocols	TCP, UDP, IP, ICMP, ARP, Ethernet, TELNET
	TFTP, DHCP, DNS, DDNS, SSL3.0/TLS1.0
Security	SSL (Secure Socket Layer)
	Password for Configuring
Communication Mode	TCP Server (T2S)
	TCP Client (COD)
	UDP Mode (U2S)
Operating System	MIC RTOS
Additional Functions	Separator settings for packet fragmentation

## Indicators (LEDs)

PWR, STS1, STS2, LAN1, LAN2, Serial

## Supplementary Software

ezManager	Configuration Tool for Windows
ezVSP	Serial to Network Virtual Driver for Windows
ezTerm	Simple TCP/IP Communication Test Tool

## Dimension

Size	437mm x 240mm x 44mm
------	----------------------

## Operating Environment

Input Voltage	AC 85V ~ 264V
Power Consumption	10W
Operating Temperature	0°C ~ +60°C
Storage Temperature	-20°C ~ +70°C

# System Diagram

